

Newburyport Public Schools:
School Committee Meeting

January 3, 2023

Newburyport Public Schools : Language-Based Learning Disability Programming

Multi-Model Structure:

Direct Reading Instruction

Language-Based Instruction (LBI)

Strategies-Based Instruction (SBI)

NPS Vision

Develop intensive, comprehensive and integrated in-district programming options to support students with language-based learning disabilities.

Newburyport's Portrait of a Graduate



Physically, socially and emotionally well



Literate across all disciplines



Creative, innovative, collaborative problem-solvers



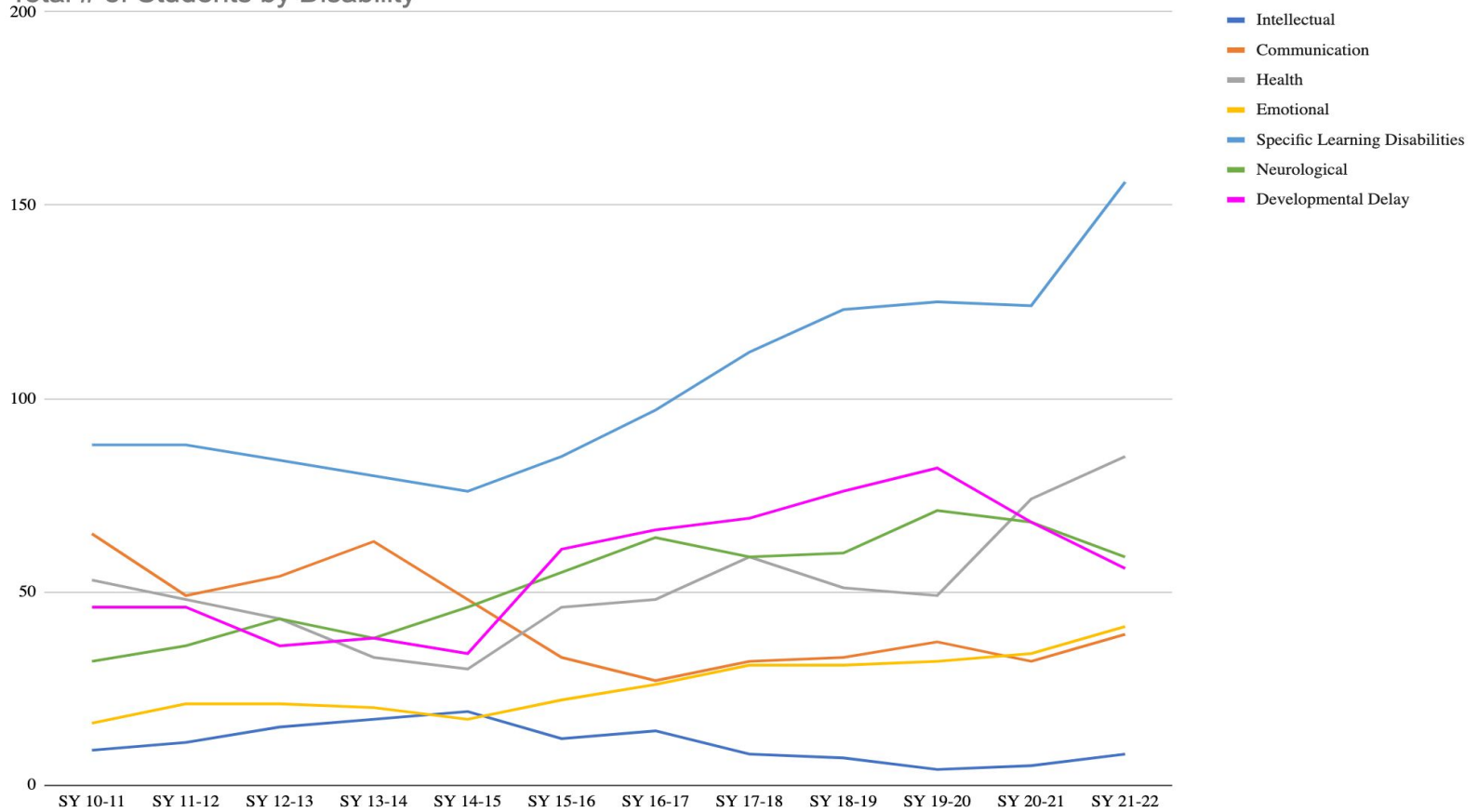
Civically engaged



Prepared for life after graduation

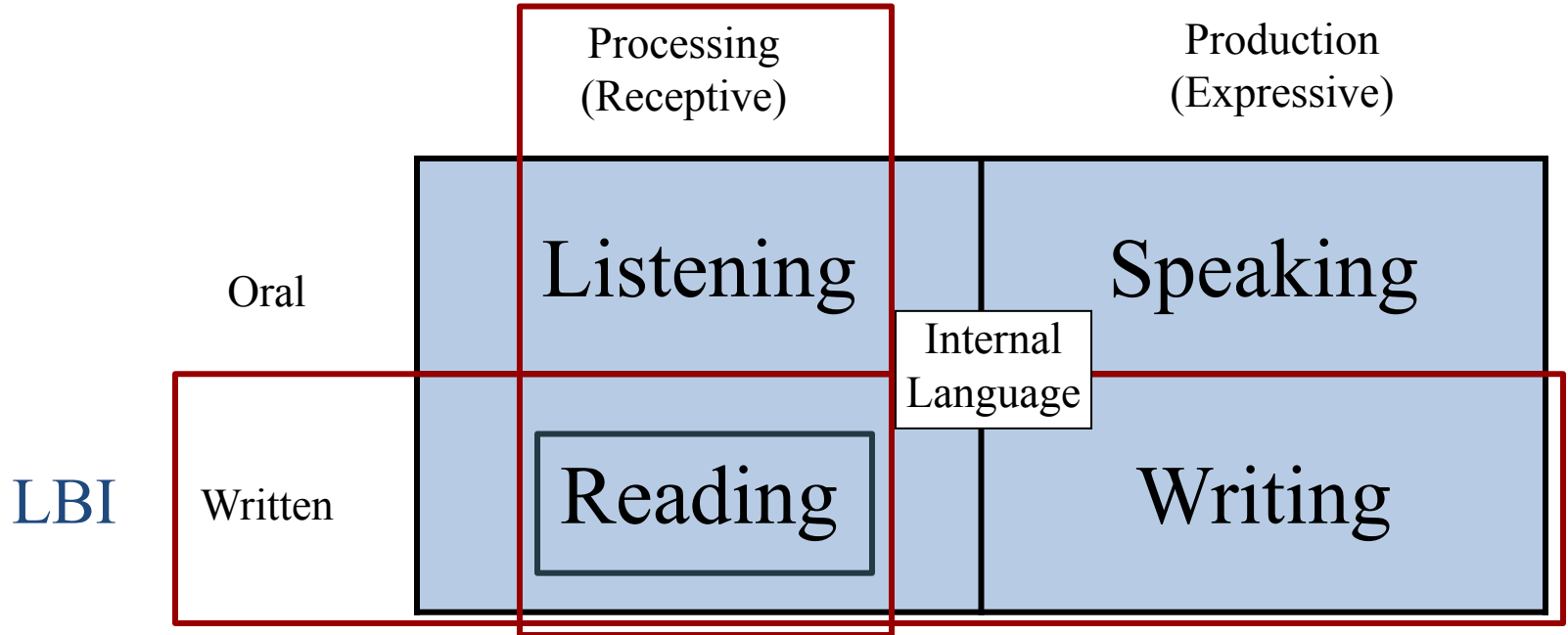
<i>Reimagine</i>	Teaching and Learning	Supports so all Students are Ready and Able to Learn	Culture of Self Discovery and Personal Achievement	Organizational Design and Operations	Active Community of Stakeholders
Professional Practice Goal instructional leadership	Implement PK-12 literacy plan	Language and Strategies Based Professional Development Co-teaching model	Expand behavioral health capacity District-level support for student voice programs	Structures to Support Active Teacher Leadership	Structures to Support Active Teacher Leadership
Student Learning Goal closing achievement gaps	High impact and engaging instructional practices are used across the district	Special education program development (IDC, Therapeutic, strategies-based, language based, ABA)	Extended day and vacation programs	Free Kindergarten for all students Special education and Intervention positions	Established reporting structure to share progress with community
School Improvement Goal student, parent and teacher-friendly data	District-wide plan for data collection, analysis and reporting (iReady, Data teams, student led conferences)	Intervention at every level (intervention positions) iReady implementation	District level support for student-centered data analysis Student-led Conferences	Established district-level reporting structure	Established district-level reporting structure
District Improvement Goal comprehensive, rigorous, equitable, and relevant curricula	Ongoing cycle of curriculum review (curriculum maps) Established district-level reporting structure	District-wide multi-tiered systems of support (behavioral health, SSTs) Expansion of Co-teaching Model	Expanded opportunities for learners at all levels (summer and vacation programs)	Special education program development	District-level communication plan

Total # of Students by Disability



Language

SBI



LBI Program

- Language Based Instruction (LBI) supports deficits in reading, writing and phonological awareness.
- **Speech and Language Pathologist** in collaboration with special educator
- **Instructional Focus:** on phonology and the organization of language, particularly in the area of written language.
- **Progress monitoring** utilizes informal and formal testing to inform instruction
- **Specialized Educator Training:** OG Reading, Landmark Executive Function and Writing
- **The overall goal of the LBI program** is developing literacy skills and strategies, providing supported access to grade level curriculum, and the opportunity to be educated in their home community with their peers.

SBI Program

- Strategy Based Instruction (SBI) supports deficits in reading, writing and phonological awareness as well as processing and producing language.
- **Speech Language Pathologist** provides regular programmatic consultation and direct services
- **Instructional Focus:** scaffolded instructional approach that also focuses on phonology, comprehension and organization of language
- **Progress monitoring** utilizes informal and formal testing to inform instruction
- **Specialized Educator Training:** OG Reading, Landmark Executive Function and Writing
- **The overall goal of the SBI program** is developing literacy skills and strategies along with addressing language production or processing needs, providing supported access to grade level curriculum, and the opportunity to be educated in their home community with their peers.

LBI and SBI Program Statistics

- Initiated at Molin (Grades 4-5) last year (SY 21-22)
- Expanded to Bresnahan (Grades 2-3) and Nock (Grade 6-7) this year (SY 22-23)
- 13 staff trained or being trained in Orton-Gillingham through the OG Academy (2-Year Process)
 - Receive regular observations and consultation support from Landmark School Outreach
- Classrooms consist of 1 special education teacher and either another teacher or an instructional assistant
- Currently servicing 50 students in Grades 2-7
 - Grade 2: SBI - 2 & LBI - 4
 - Grade 3: SBI - 6 & LBI - 5
 - Grade 4: SBI - 3 & LBI - 6
 - Grade 5: SBI - 5 & LBI - 7
 - Grade 6: SBI - 0 & LBI - 7
 - Grade 7: SBI - 3 & LBI - 2
- Annual assessments using a combination of subtests from Kaufman Test of Educational Achievement (KTEA-3), Gray Oral Reading Test (GORT-5) and Test of Word Reading Efficiency (TOWRE-2)

Language-Based Programming Options

Direct Reading Instruction

Special ED Small Group Instruction

General ED Classrooms

Specialized Reading Instruction

Academic Support

ELA - (Writing)

Math

Science

Social Studies

LBI and SBI

Special ED Small Group Instruction

General ED LB-Partner Classrooms

Specialized Reading Instruction

Academic Support

ELA - (Writing)

Math

Science

Social Studies

Language-Based and Strategies-Based Programming 5-Yr Plan

- SY 20-21
 - Reviewed student progress, records and IEPs
 - Established programs based on student needs
 - Partnered with Landmark School Outreach
 - Identified potential initial program location (Molin: Grades 4-5)
 - Established potential appropriate class lists
 - Reviewed assessment protocols for school psychologists, reading specialist and special ed teachers
 - Identified and/or hired potential teachers for training and participation in the LBI and SBI programs

- SY 21-22
 - Implemented initial LBI and SBI programs at Molin
 - Began training teachers in Orton-Gillingham
 - Continued partnership with Landmark School Outreach

Language-Based and Strategies-Based Programming 5-Yr Plan (Cont.)

- SY 22-23
 - Continue training teachers/staff in Orton-Gillingham
 - Expanded LBI and SBI programs to grades 2-3 (Bresnahan) and grades 6-7 (Nock)
 - Reviewed data of student progress from SY 21-22
 - Continue partnership with Landmark School Outreach for vertical alignment of the programs
- SY 23-24
 - Expand LBI and SBI programs to grade 8 (Nock)
 - Review data of student progress from SY 22-23
 - Discuss expansion to NHS SY 24-25
 - Continue partnership with Landmark School Outreach for vertical alignment of the programs
- SY 24-25
 - Review data of student progress from SY 23-24
 - Potentially expand to NHS SY 24-25
 - Continue partnership with Landmark School Outreach
 - Begin transitioning to internally support LBI and SBI Programs with Landmark School Outreach consultation

