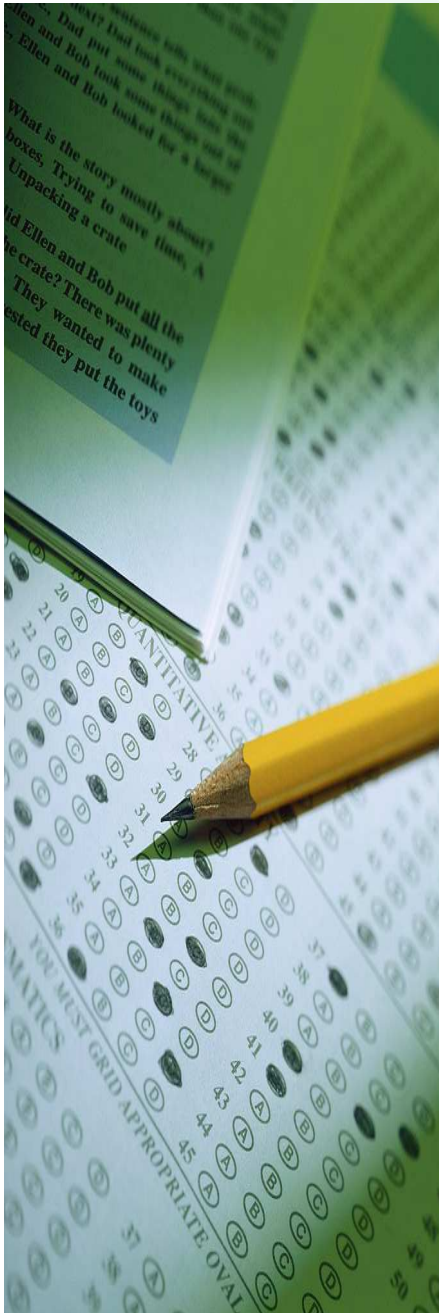


MCAS SPRING 2011

Newburyport Public Schools
October 2011



2011 MCAS Results

- Based upon:
- Curriculum Frameworks
- Alignment of Curriculum
- Teaching and Learning
- Practice and Preparation
 - Open Response
 - Short Answer
 - Multiple Choice
 - Long Composition

What Was Tested in 2011?

	<i>Grade Level</i>							
Content Area	3	4	5	6	7	8	9	10
English Language Arts (ELA)	X	X	X	X	X	X		X
Mathematics	X	X	X	X	X	X		X
Science and Technology Engineering			X			X		retakes
Biology							X	

2011 English Language Arts

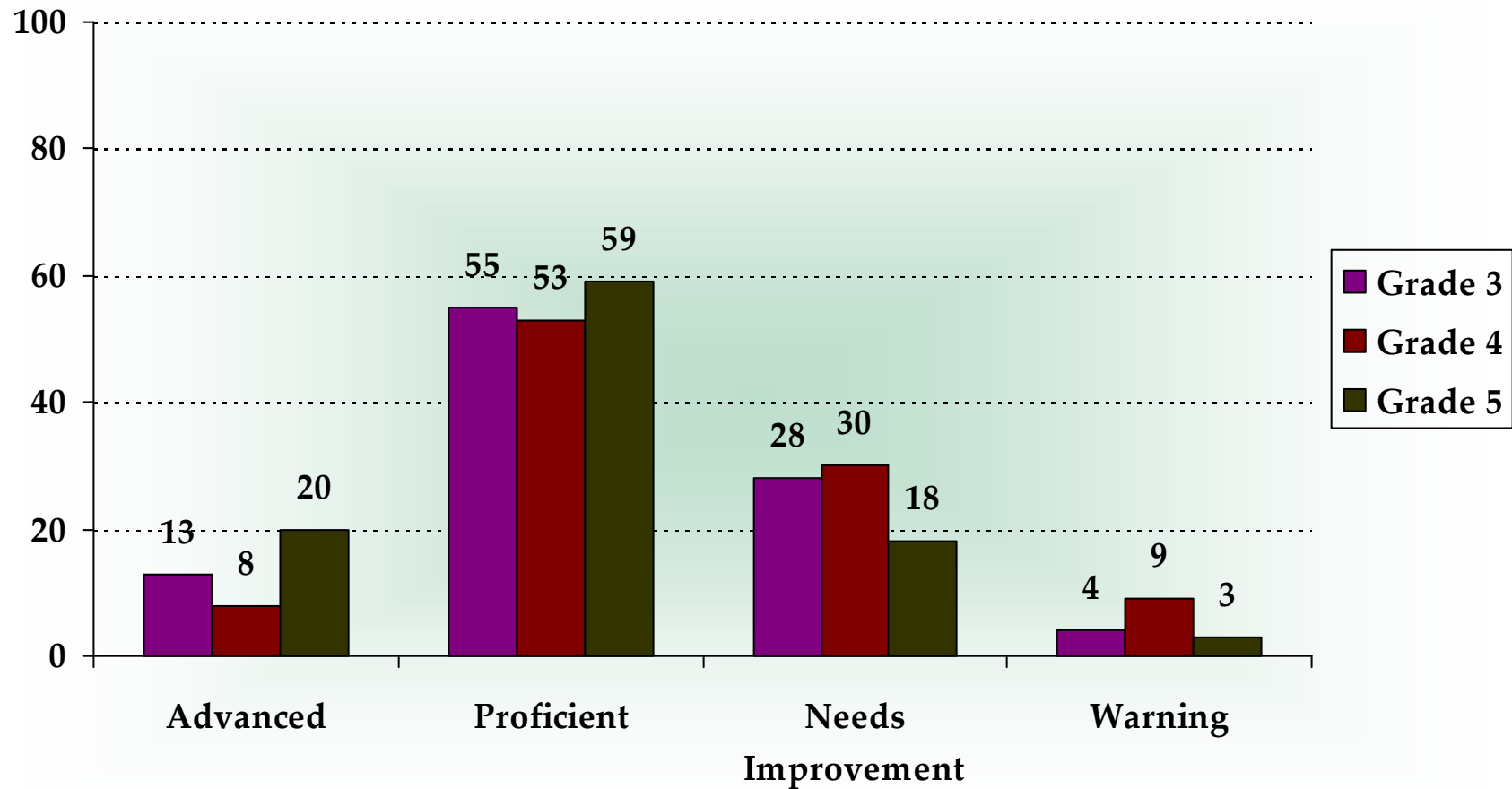
% of Students at Each Performance Level

% of Performance At:	Advanced/ Above Proficient & Proficient		Needs Improvement		Warning & Failed	
	Nbpt	State	Nbpt	State	Nbpt	State
Grade 3	68	61	28	30	4	9
Grade 4	61	53	30	35	9	12
Grade 5	79	67	18	24	3	9
Grade 6	85	68	13	23	2	9
Grade 7	86	73	10	21	4	6
Grade 8	91	79	8	15	2	6
Grade 10	94	84	5	13	1	3

English Language Arts 2011

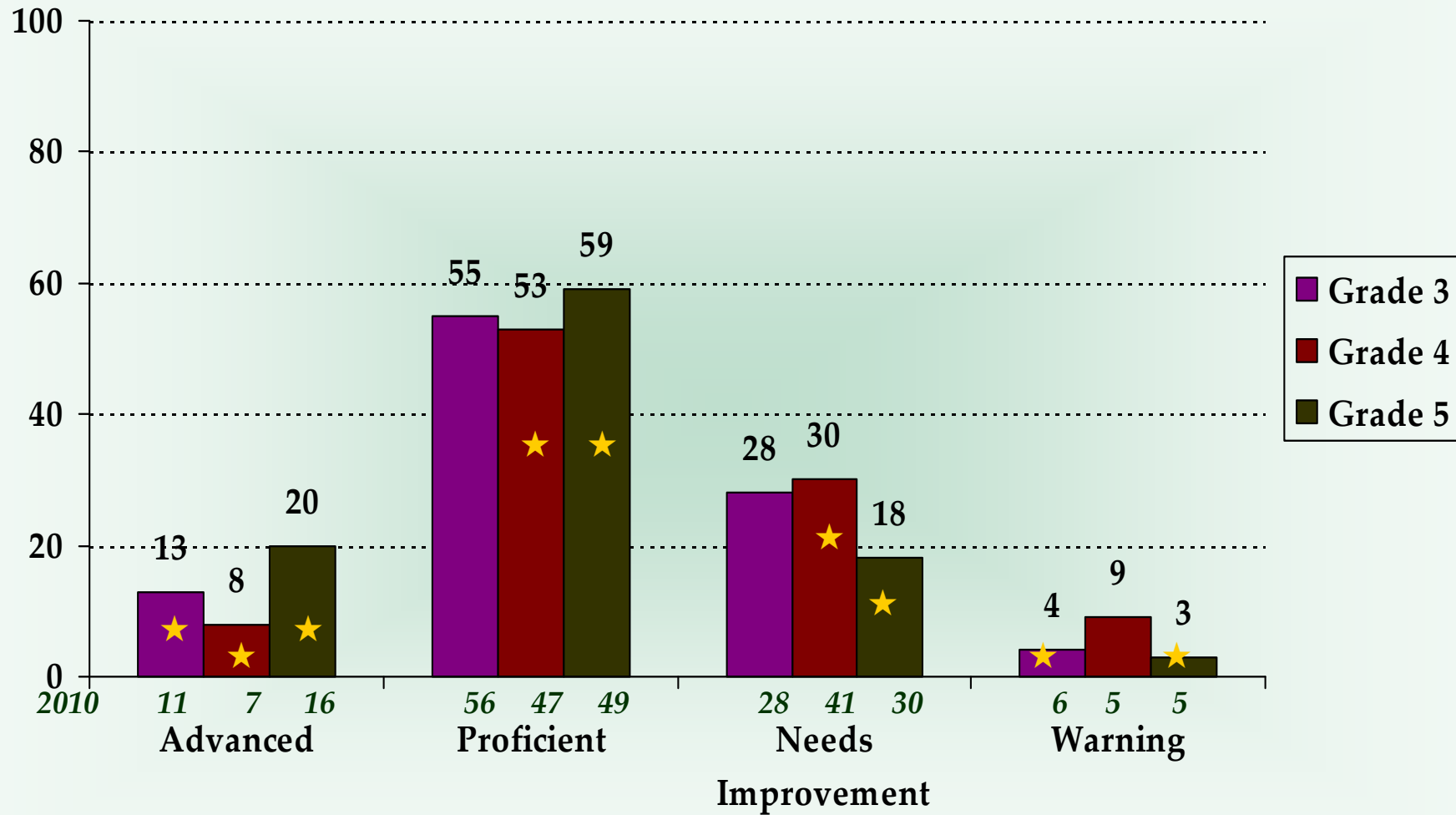
% of Students at each Performance Level

Grades 3, 4, 5



2010-2011 ELA Comparison Gr.3, 4, 5

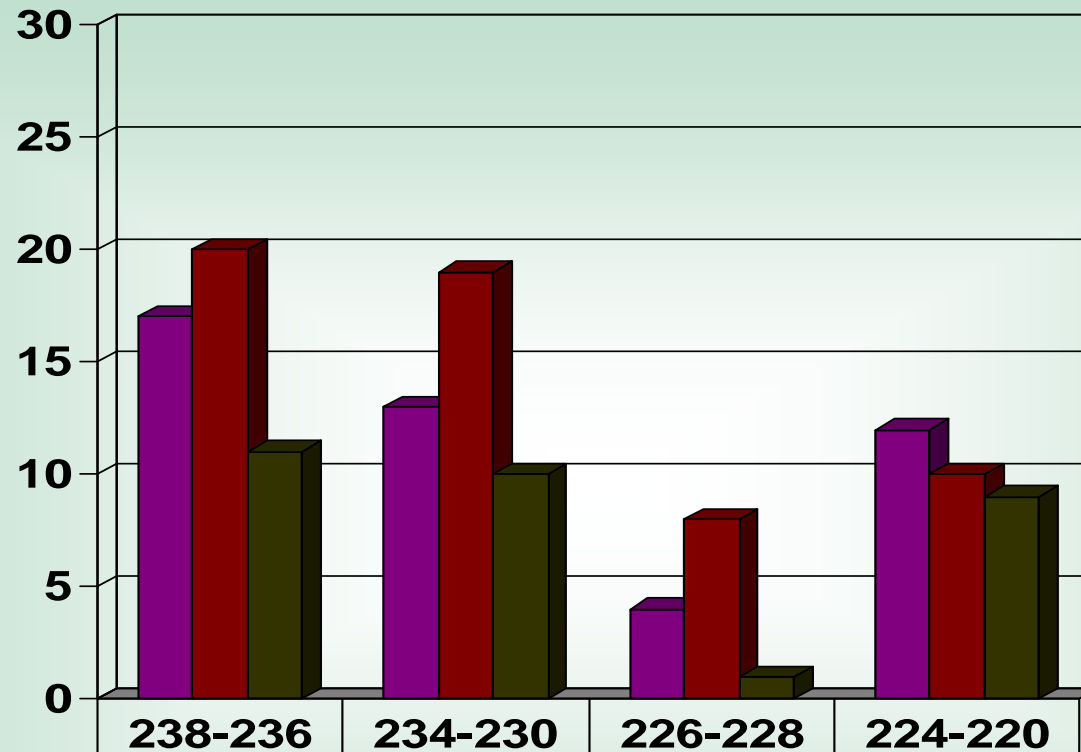
Improvement in 9 categories



Spring 2011 ELA Needs Improvement Students

Grade 3 (28%), Grade 4 (30%), & Grade 5 (18%)

Detailed Distribution Upper to Lower Band (# of Students)



2011- NI

Grade 3 – 46

- 23 Non SPED/LI (50%)
- 17 SPED (37%)
- 6 Low Inc (13%)
- 3 SPED &LI (7%)

Grade 4 – 57

- 44 Non SPED/LI (77%)
- 7 SPED (12%)
- 6 Low Inc (11%)
- 1 SPED &LI (-%)

Grade 5 – 31

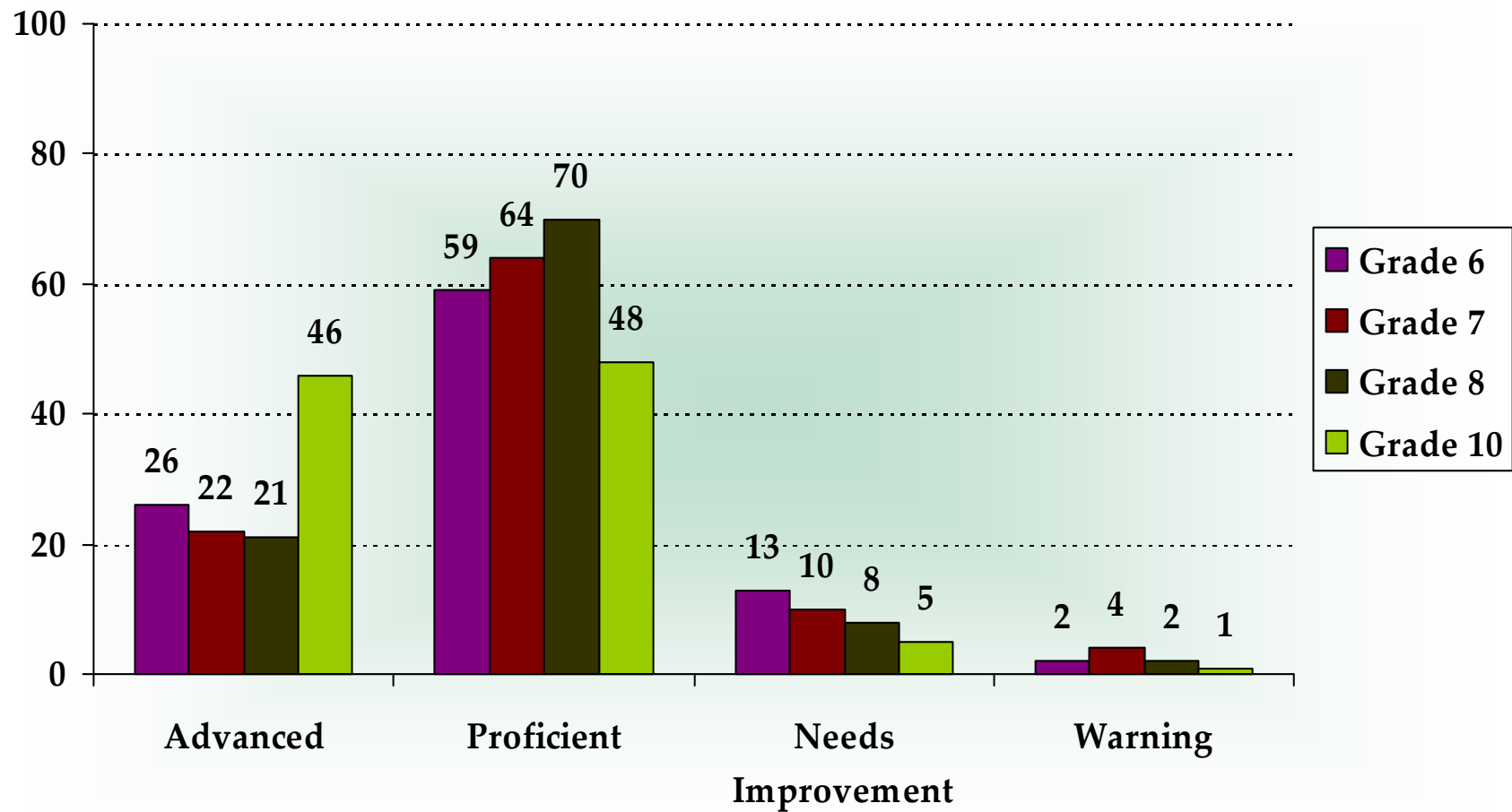
- 10 Non SPED/LI (32%)
- 12 SPED (39%)
- 9 Low Inc (29%)
- 5 SPED &LI (16%)

Grade 3- 46	17 37%	13	4	12 7-SPED; 2-LI; 1-SP&LI
Grade 4- 57	20 35%	19	8	10 2-SPED; 0-LI; 0-SP&LI
Grade 5- 31	11 35%	10	1	9 6-SPED; 3-LI; 2-SP&LI

English Language Arts 2011

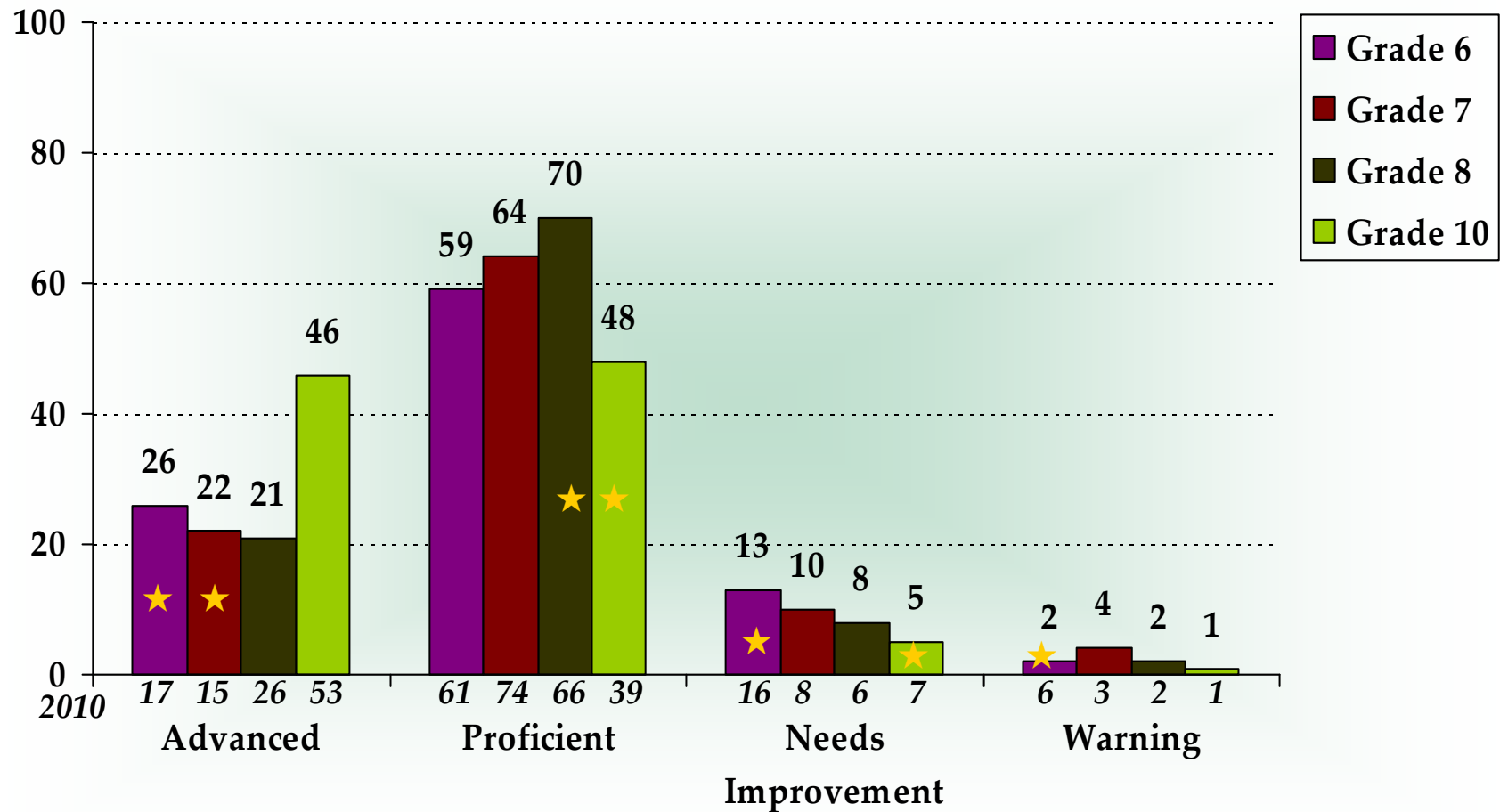
% of Students at each Performance Level

Grades 6, 7, 8, 10



2010-2011 ELA Comparison Gr.6, 7, 8, 10

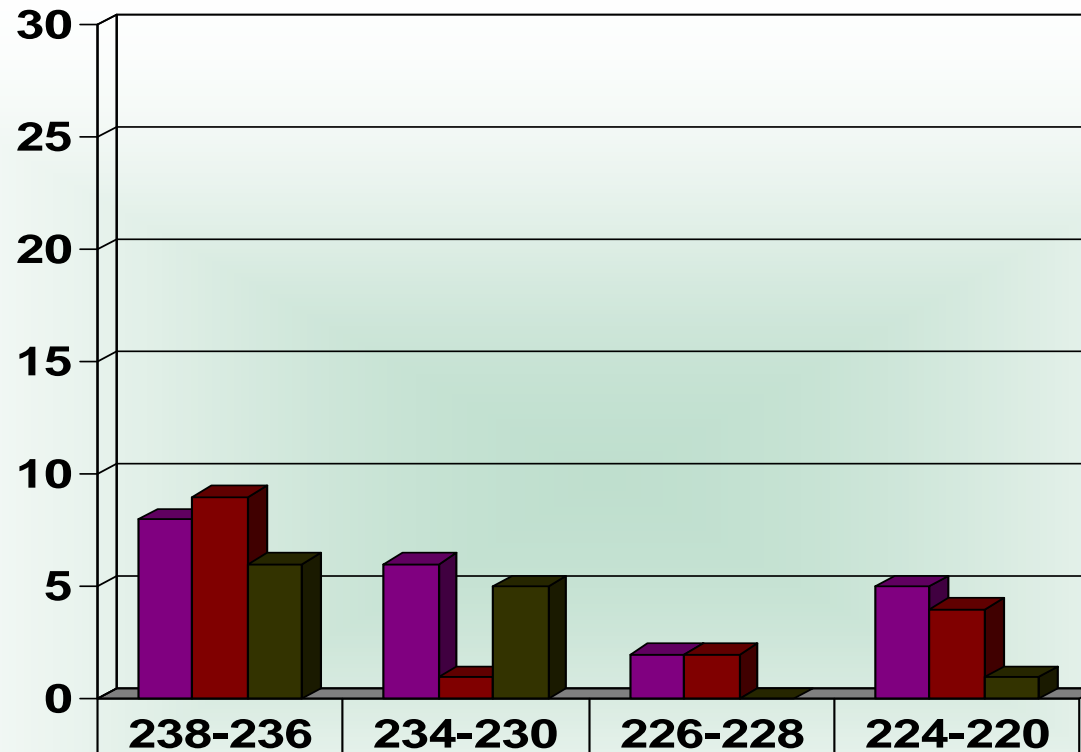
Improvement in 7 categories



Spring 2011 ELA Needs Improvement Students

Grade 6 (13%), Grade 7 (10%), & Grade 8 (8%)

Detailed Distribution Upper to Lower Band (# of Students)



2011- NI

Grade 6 – 21

- 8 Non SPED/LI (38%)
- 9 SPED (43%)
- 4 Low Inc (19%)
- 2 SPED &LI (10%)

Grade 7 – 16

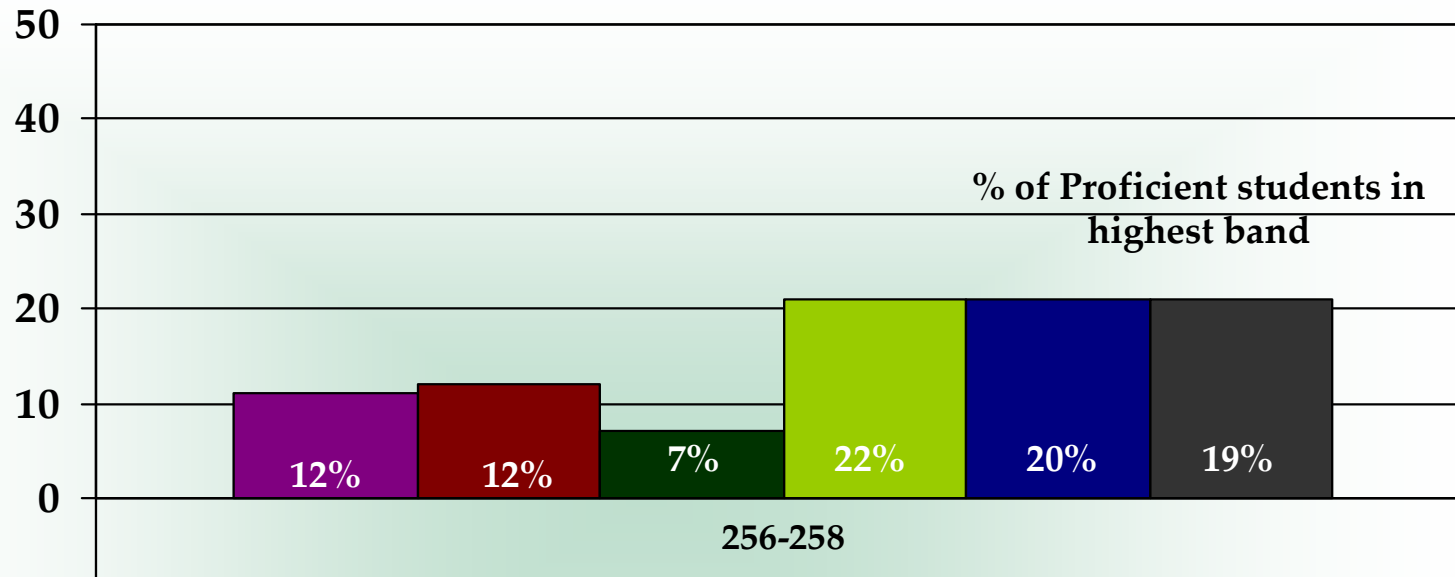
- 4 Non SPED/LI (25%)
- 8 SPED (50%)
- 4 Low Inc (25%)
- 3 SPED &LI (19%)

Grade 8 – 12

- 0 Non SPED/LI (0%)
- 5 SPED (42%)
- 7 Low Inc (58%)
- 4 SPED &LI (33%)

■ Grade 6- 21	8 38%	6	2	5 1-SPED; 1-SP&LI
■ Grade 7- 16	9 56%	1	2	4 2-SPED; 1-SP& LI
■ Grade 8- 12	6 50%	5	0	1 1-SPED & LI

Spring 2011 ELA Proficient # of Students at Upper Band Score of 256-258 within 4 points of Advanced



■ Grade 3- 90	55% (of aggregate)	11	# of Proficient students in highest band
■ Grade 4- 97	53%	12	
■ Grade 5- 105	59%	7	
■ Grade 6- 97	59%	21	
■ Grade 7- 106	64%	21	
■ Grade 8- 108	70%	21	

English Language Arts Cohorts

%	2004		2005		2006		2007		2008		2009		2010		2011	
	A & P	W	A & P	W	A & P	W	A & P	W	A & P	W	A & P	W	A & P	W	A & P	W
Grade 3	69	1	75	1	68	5	68	5	65	7	61	6	67	6	68	4
Grade 4	62	4	46	7	55	5	57	9	43	11	54	6	54	5	61	9
Grade 5	-	-	-	-	62	4	71	3	73	5	69	6	65	5	79	3
Grade 6	-	-	-	-	83	3	64	3	83	2	81	5	78	6	85	2
Grade 7	85	3	84	2	81	1	84	2	76	2	92	1	89	3	86	4
Grade 8	-	-	-	-	90	2	89	3	87	3	89	2	92	2	91	2
Grade 9	-	-	-	-	-	-	-	-	-	-	-	-	-	-	-	-
Grade 10	83	5	81	4	84	5	90	2	92	2	94	1	92	1	94	1

2011 ELA - Grades 4, 8 & 10

% of Advanced & Proficient Students

ELA Grade 4

Newburyport 2011 – 60% Comparative Communities

	<u>2011-%</u>
1. Scituate	78
2. Wakefield	68
3. Bedford	72
4. Swampscott	67
5. Newburyport	60
6. Burlington	53

Geographic Proximity

	<u>2011-%</u>
1. Pentucket	70
2. Georgetown	66
3. Ipswich	63
4. Newburyport	60
4. Amesbury	60
5. Triton	59

Aspiration Communities

	<u>2011-%</u>
1. Wellesley	82
2. Winchester	80
3. Medfield	72
4. Holliston	71
5. Needham	70
6. Newburyport	60

ELA Grade 8

Newburyport 2011 – 92% Comparative Communities

	<u>2011-%</u>
1. Scituate	95
2. Swampscott	94
2. Bedford	94
3. Newburyport	90
4. Wakefield	88
5. Burlington	87

Geographic Proximity

	<u>2011-%</u>
1. Newburyport	90
2. Georgetown	89
3. Ipswich	86
4. Pentucket	84
4. Triton	84
5. Amesbury	77

Aspiration Communities

	<u>2011-%</u>
1. Winchester	95
1. Wellesley	95
2. Needham	93
2. Holliston	93
3. Newburyport	92
3. Medfield	92

ELA Grade 10

Newburyport 2011 – 95% Comparative Communities

	<u>2011-%</u>
1. Newburyport	95
2. Burlington	94
3. Scituate	92
4. Bedford	91
5. Wakefield	89
6. Swampscott	82

Geographic Proximity

	<u>2011-%</u>
1. Newburyport	95
2. Ipswich	93
2. Pentucket	93
3. Georgetown	92
3. Triton	92
5. Amesbury	88

Aspiration Communities

	<u>2011-%</u>
1. Medfield	99
2. Wellesley	97
3. Winchester	96
4. Newburyport	95
5. Needham	94
5. Holliston	94

English Language Arts Findings

High School

- ✓ **94% of students in Advanced & Proficient categories**
- ✓ **Fewer students in advanced**
- ✓ **Scores held steady over the past 5 years**
- ✓ **Cohorts improved from Grade 8 consistently**
- ✓ **All groups did make Adequate Yearly Progress (AYP)**

Middle School

- ✓ **91% of 8th students in Advanced & Proficient categories**
- ✓ **Increase in score at grades 6 & 8**
- ✓ **Consistent growth from cohorts**
- ✓ **20% gain from grade 5 to 6**
- ✓ **Gains in advanced category**
- ✓ **Subgroups did make Adequate Yearly Progress (AYP)**

Elementary Schools

- ✓ **Growth of Grades 3, 4, & 5**
- ✓ **Growth in advanced category**
- ✓ **39% of Students at grade 4 scored in Needs Improvement or Warning**
- ✓ **Higher % of students in 'upper band' of Needs Improvement**
- ✓ **All subgroups did make AYP in all groups**
- ✓ **Subgroup students struggling with Open Response & Composition questions**

English Language Arts Actions

High School

- ✓ Disaggregate data
- ✓ Analyze student responses
- ✓ Continue instructional alignment
- ✓ Provide Resources for Writing Lab
- ✓ Embed MCAS “type” questions in assessments
- ✓ Provide MCAS Academic Support

Middle School

- ✓ Disaggregate data
- ✓ Focus energy on writing –year 2
- ✓ Implement building literacy data teams PreK-8
- ✓ Utilize coaching strategically with teachers
- ✓ Continue to focus on looking at student work
- ✓ Continue to use assessment to drive instruction
- ✓ Implement greater assessment data to inform teachers
- ✓ Continue after school intervention programs k-2, expand 3-5
- ✓ Provide students with weekly after school support from classroom teachers
- ✓ Use team meetings to discuss instructional practices
- ✓ Monitor differentiation of instruction
- ✓ Continue to implement high level of professional development in literacy

Elementary Schools

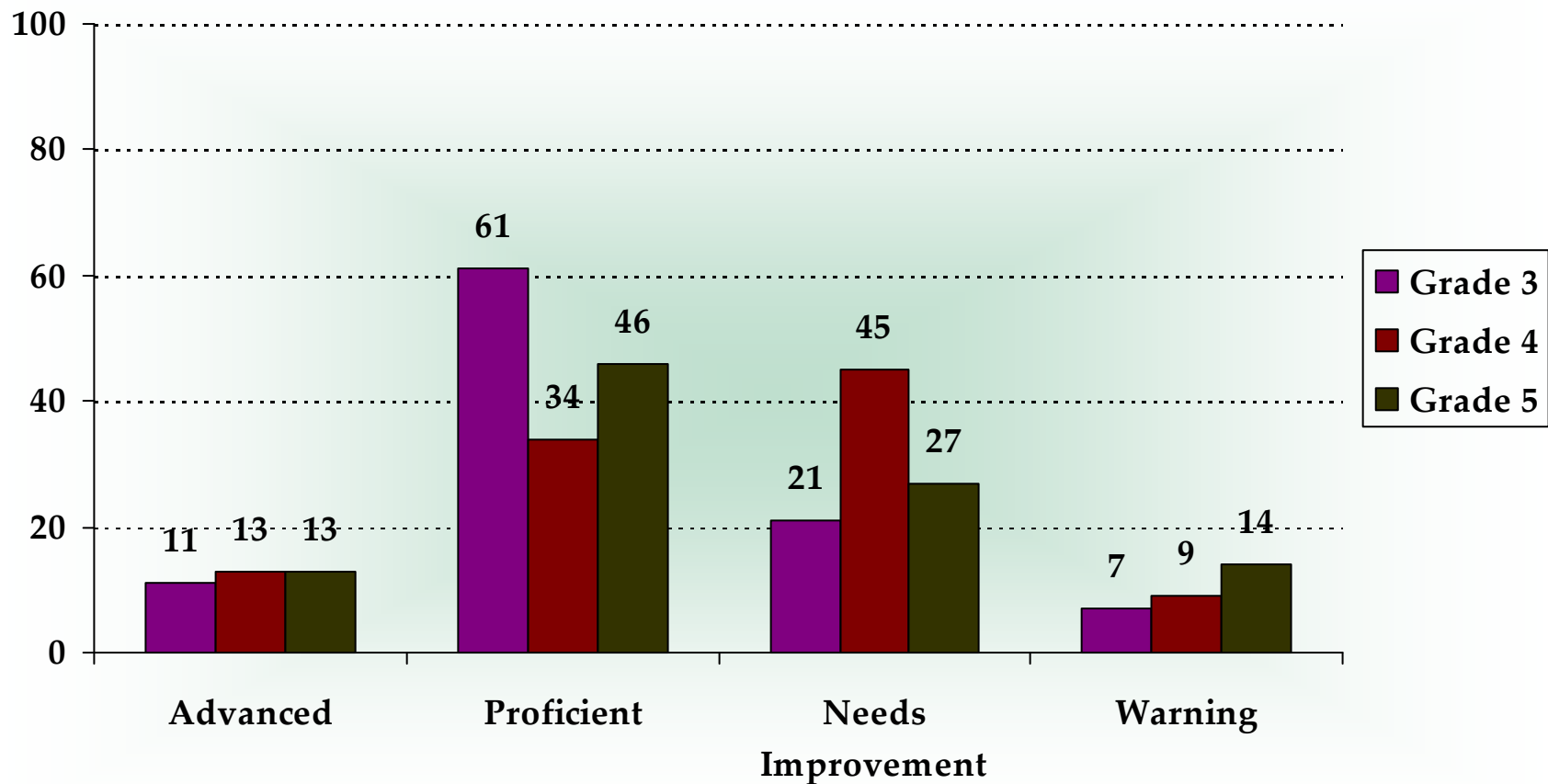
2011 Mathematics

% of Students at Each Performance Level

Performance %	Advanced/ Above Proficient & Proficient		Needs Improvement		Warning & Failed	
	Nbpt	State	Nbpt	State	Nbpt	State
Grade 3	72	66	21	25	7	10
Grade 4	47	47	45	42	9	11
Grade 5	59	59	27	26	14	15
Grade 6	54	58	34	25	12	16
Grade 7	63	51	22	27	16	22
Grade 8	75	52	19	27	7	21
Grade 10	90	77	7	16	2	7

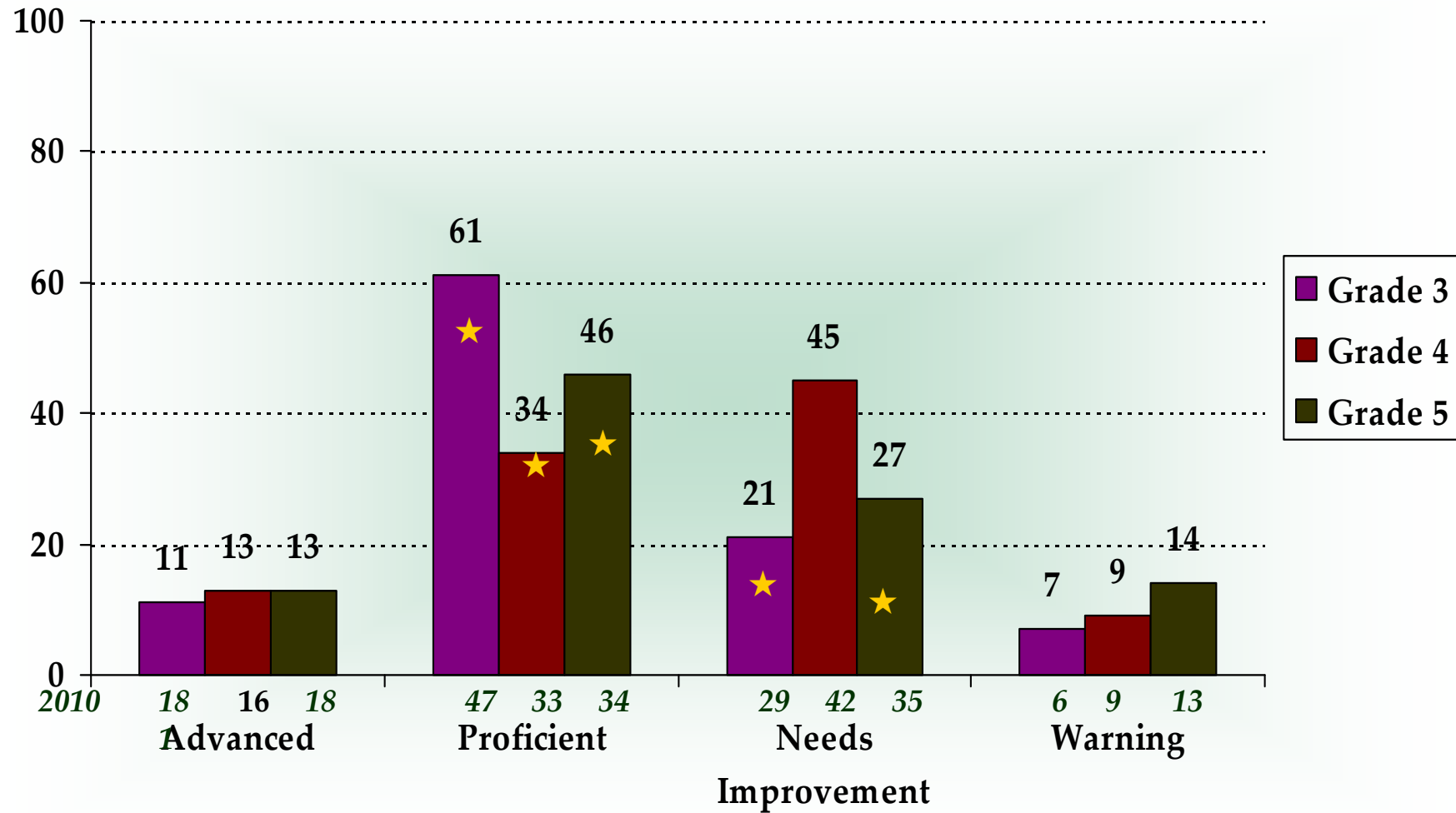
Mathematics 2011 - Grades 3, 4, 5

% of Students at each Performance Level



2010-2011 Math Comparison Gr.3, 4, 5

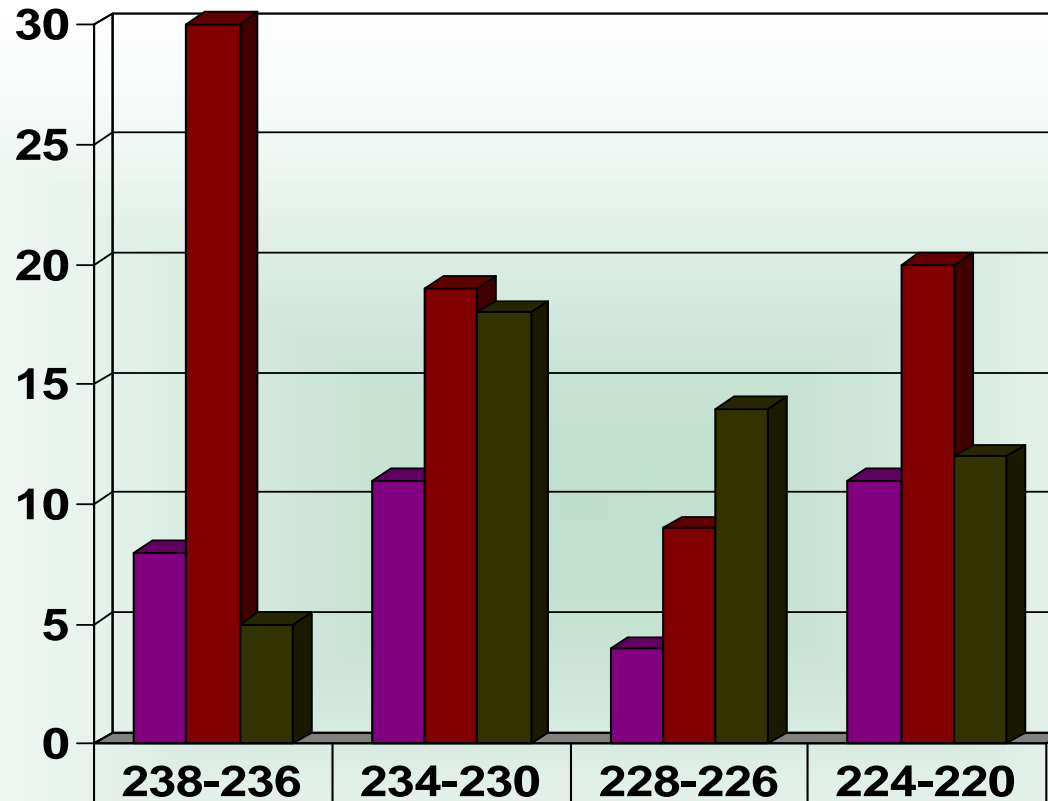
Improvement in 5 categories



Spring 2011 Math Needs Improvement Students

Grade 3 (21%), Grade 4 (45%), & Grade 5 (28%)

Detailed Distribution Upper to Lower Band (# of Students)



2011- NI

Grade 3 – 34

- 21 Non SPED/LI (62%)
- 13 SPED (38%)
- 1 Low Inc (3%)
- 1 SPED &LI (1%)

Grade 4 – 83

- 63 Non SPED/LI (76%)
- 12 SPED (14%)
- 8 Low Inc (10%)
- 1 SPED &LI (1%)

Grade 5 – 49

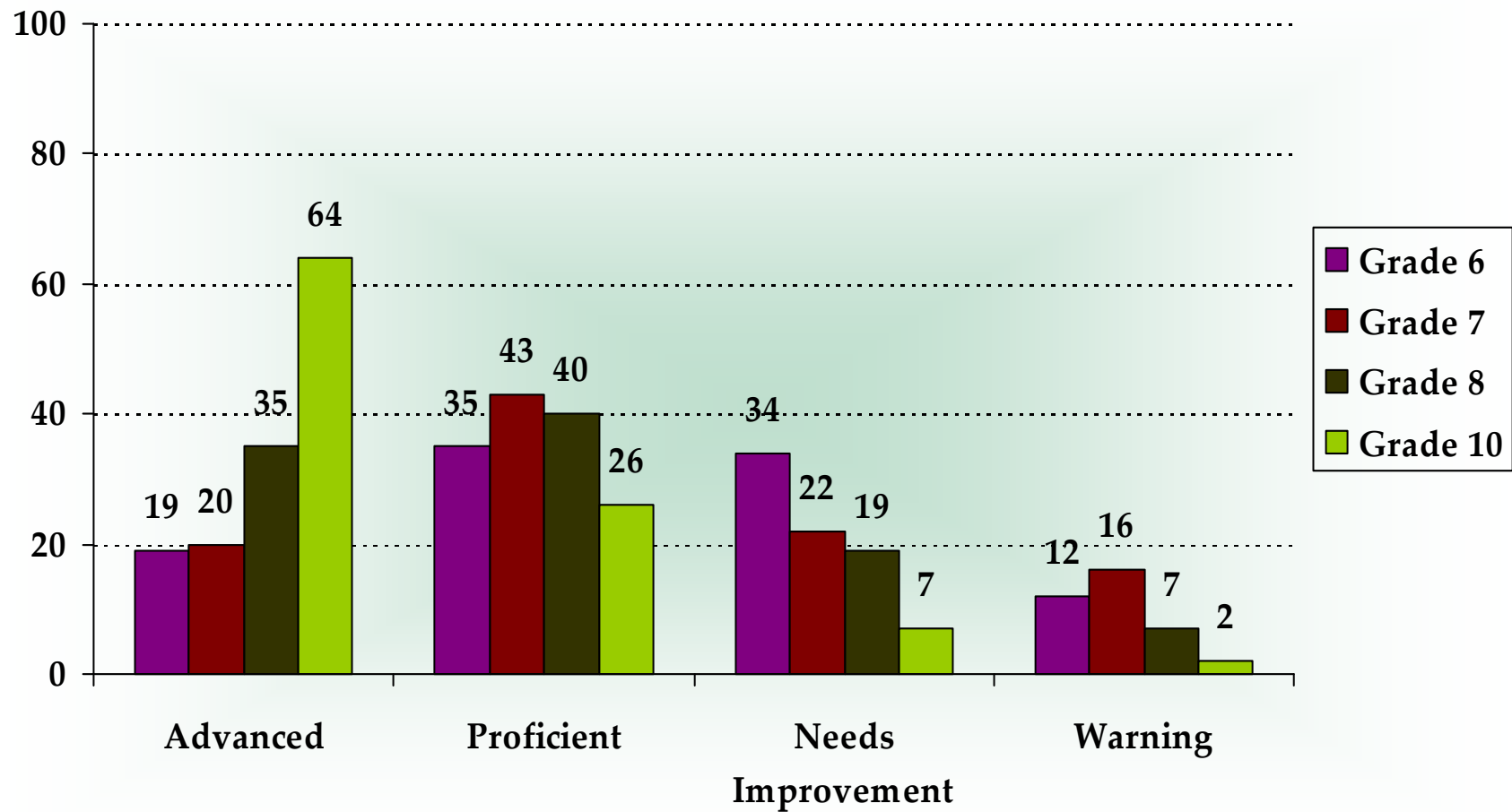
- 32 Non SPED/LI (65%)
- 9 SPED (19%)
- 8 Low Inc (16%)
- 2 SPED &LI (4%)

■ Grade 3- 34	8 26%	11	4	11 6-SPED; 1-LI; 1-SP&LI
■ Grade 4- 83	35 42%	19	9	20 5-SPED; 2-LI; 0-SP&LI
■ Grade 5- 49	5 10%	18	14	12 1-SPED; 3-LI; 1-SP&LI

Mathematics 2011

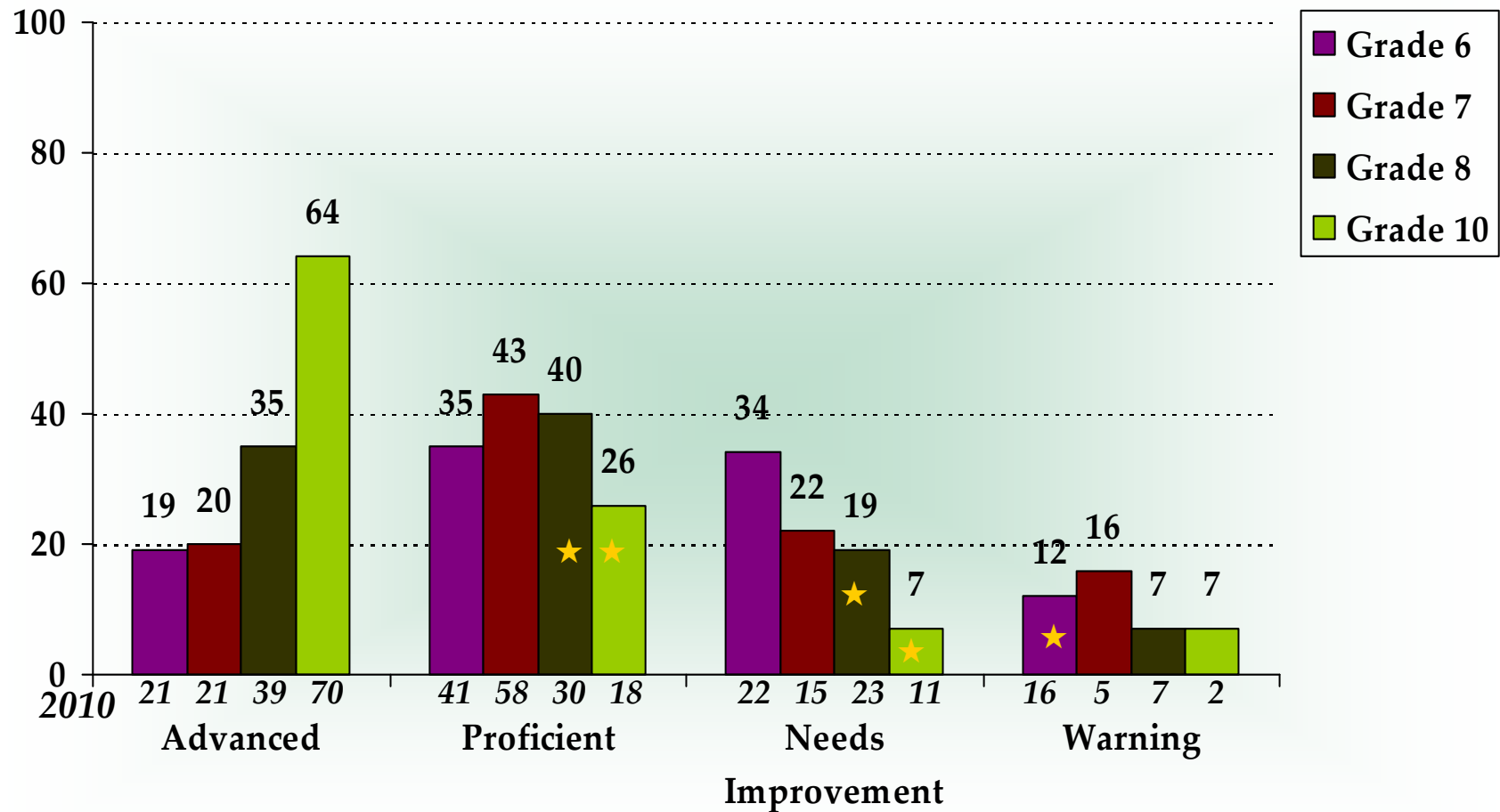
% of Students at each Performance Level

Grades 6, 7, 8, 10



2010-2011 Mathematics Gr.6, 7, 8, 10

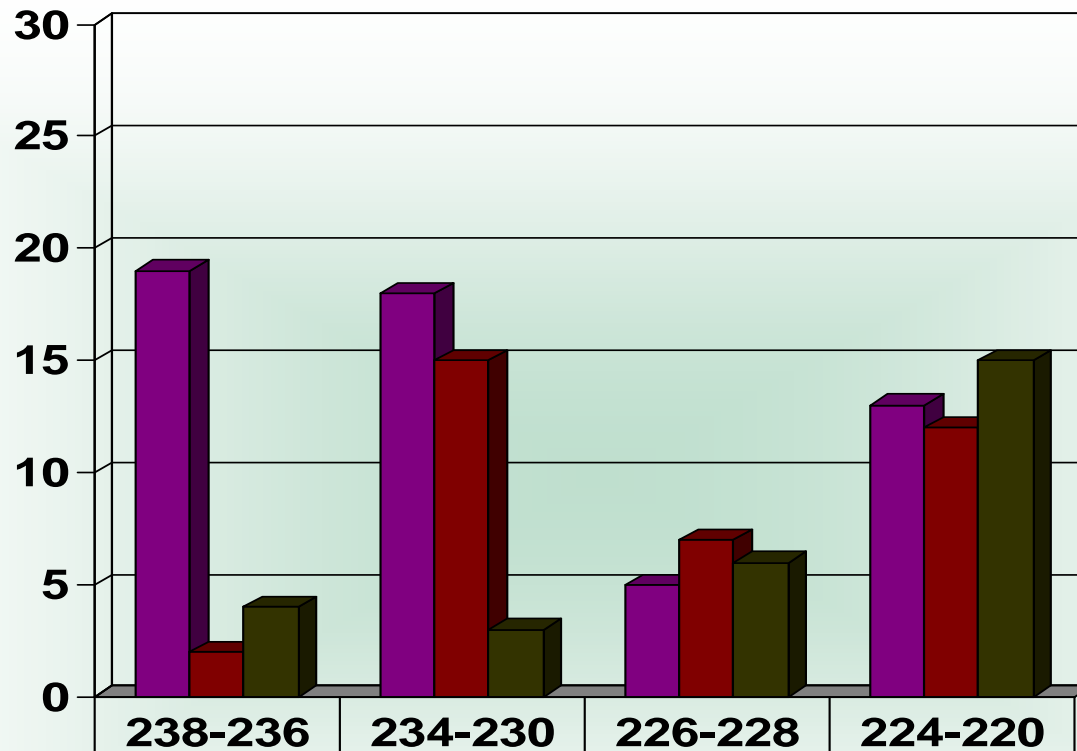
Improvement in 5 categories



Spring 2011 Math Needs Improvement Students

Grade 6 (34%), Grade 7 (22%), & Grade 8 (18%)

Detailed Distribution Upper to Lower Band (# of Students)



2011- NI

Grade 6 – 55

- 36 Non SPED/LI (65%)
- 13 SPED (24%)
- 6 Low Inc (11%)
- 2 SPED &LI (4%)

Grade 7 – 36

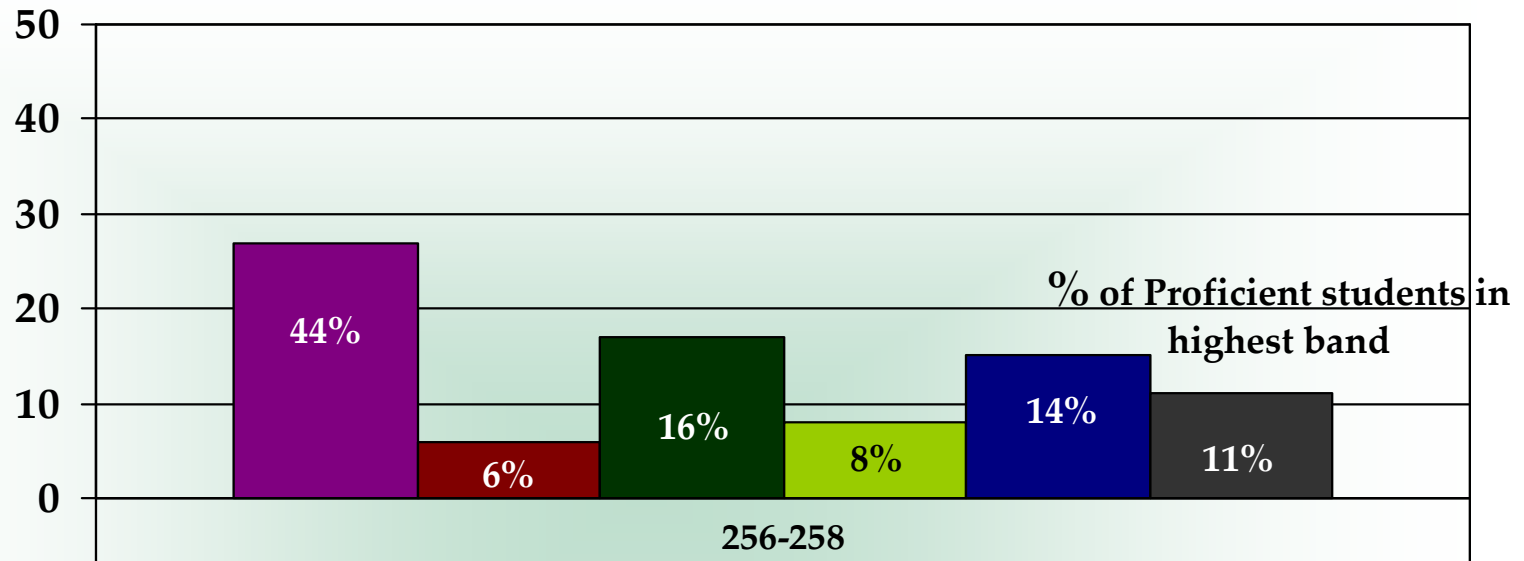
- 33 Non SPED/LI (25%)
- 1 SPED (50%)
- 2 Low Inc (25%)
- 0 SPED &LI (-%)

Grade 8 – 28

- 14 Non SPED/LI (50%)
- 8 SPED (29%)
- 6 Low Inc (21%)
- 3 SPED &LI (11%)

Grade 6- 55	19 35%	18	5	13 6-SPED; 3-LI; 1-SP&LI
Grade 7- 36	2 6%	15	7	12 0-SPED; 0-SP& LI
Grade 8- 28	4 15%	3	6	15 7-SPED; 4-LI; 2-SP&LI

Spring 2011 Math Proficient # of Students at Upper Band Score of 256-258 within 4 points of Advanced



■ Grade 3- 61	61% (of aggregate)	27	# of Proficient students in highest band
■ Grade 4- 97	34%	6	
■ Grade 5- 105	46%	17	
■ Grade 6- 97	35%	8	
■ Grade 7- 106	43%	15	
■ Grade 8- 108	40%	11	

Mathematics Cohorts

%	2004		2005		2006		2007		2008		2009		2010		2011	
	A&P	Warn	A&P	Warn	A&P	Warn	A&P	Warn	A&P	Warn	A&P	Warn	A&P	Warn	A&P	Warn
Grade 3	-	-	-	-	57	10	63	15	58	10	58	14	65	6	72	7
Grade 4	49	12	34	15	45	9	49	10	47	17	50	8	49	9	47	9
Grade 5	-	-	-	-	22	37	56	13	63	12	53	14	52	13	59	14
Grade 6	39	18	37	23	29	26	42	20	60	10	61	13	62	16	54	12
Grade 7	-	-	-	-	37	19	67	10	48	17	70	9	79	5	63	16
Grade 8	44	22	58	15	36	21	53	12	67	10	58	12	69	7	75	7
Grade 9	-	-	-	-	-	-	-	-	-	-	-	-	-	-	-	-
Grade 10	78	11	85	5	80	7	92	2	87	3	90	2	88	2	90	2

2011 Math - Grades 4, 8 & 10

% of Advanced & Proficient Students

Math Grade 4

Newburyport 2011 – 46%
Comparative Communities

	<u>2011-%</u>
1.Scituate	75
2.Wakefield	62
3.Bedford	60
4.Swampscott	57
5.Burlington	47
6.Newburyport	46

Geographic Proximity

	<u>2011-%</u>
1.Triton	66
2.Georgetown	65
3.Amesbury	58
4.Ipswich	50
5.Newburyport	46
5.Pentucket	46

Aspiration Communities

	<u>2011-%</u>
1.Winchester	72
2.Holliston	67
3.Wellesley	66
4.Needham	64
5.Medfield	57
6.Newburyport	46

Math Grade 8

Newburyport 2011 – 73%
Comparative Communities

	<u>2011-%</u>
1.Scituate	79
2. Bedford	76
3.Newburyport	73
4. Swampscott	65
5. Burlington	63
6. Wakefield	61

Geographic Proximity

	<u>2011-%</u>
1.Ipswich	75
2.Newburyport	73
3.Georgetown	72
4.Triton	63
5.Pentucket	60
5.Amesbury	60

Aspiration Communities

	<u>2011-%</u>
1.Wellesley	82
2.Winchester	80
2.Needham	80
3.Medfield	78
4.Newburyport	73
5.Holliston	67

Math Grade 10

Newburyport 2011 – 90%
Comparative Communities

	<u>2011-%</u>
1.Newburyport	90
2.Burlington	89
3.Bedford	88
4. Scituate	87
5.Swampscott	83
6.Wakefield	80

Geographic Proximity

	<u>2011-%</u>
1.Newburyport	90
1.Ipswich	90
2.Georgetown	87
2.Pentucket	87
3.Triton	85
4.Amesbury	84

Aspiration Communities

	<u>2011-%</u>
1.Medfield	97
2.Wellesley	94
3.Winchester	92
3.Needham	92
4.Newburyport	90
4.Holliston	90

Mathematics Findings

High School

- ✓ **90% of students in Advanced & Proficient categories**
- ✓ **64% were advanced**
- ✓ **Scores held steady over the past 5 years**
- ✓ **Cohort improved from Grade 8 to Grade 10 consistently**
- ✓ **All groups did make Adequate Yearly Progress (AYP)**

Middle School

- ✓ **75% of students in Grade 8 scored in Advanced & Proficient categories, the highest ever**
- ✓ **Drop in scores in grade 6 & 7**
- ✓ **Large numbers of students in the Needs Improvement category**
- ✓ **Largest % of students in 'upper band' of Needs Improvement in Grades 6**
- ✓ **Stable cohort scores 5-6, 6-7**
- ✓ **Students struggling with short answer questions Grade 6**
- ✓ **Aggregate and Subgroups did not make AYP grades 4-8; Restructuring Year 3 - MS**

Elementary Schools

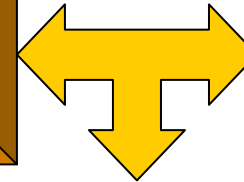
- ✓ **Improvement in Grade 3, the highest scores ever**
- ✓ **Major drop in cohort grade 3-4**
- ✓ **Increase in scores for cohort 4-5**
- ✓ **Bresnahan School did make AYP in all groups**
- ✓ **Molin School did not make AYP in the aggregate or subgroups Improvement Year 3-Subgroups**

Mathematics Actions

High School

Middle School

Elementary Schools



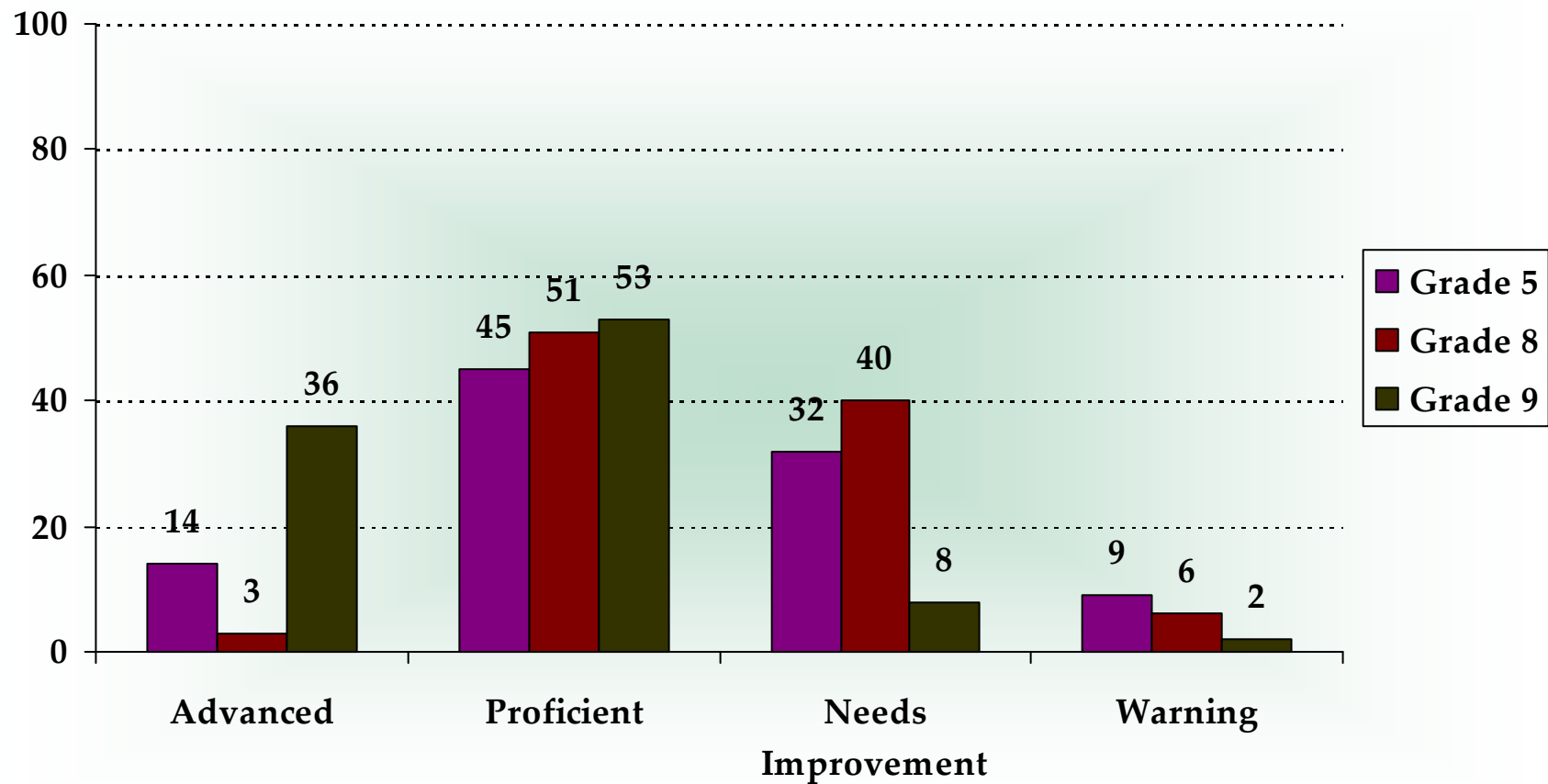
- ✓ Disaggregate data
- ✓ Focus on reading questions for understanding of the topic
- ✓ Teach strategies for problem solving
- ✓ Continue to focus on the strategy of “guess and check” for greater accuracy
- ✓ Provide MCAS academic support

- ✓ Disaggregate data
- ✓ Examine data for instructional alignment
- ✓ Further examine MCAS Item Analysis data
- ✓ Work towards consistencies in differentiation of math instruction
- ✓ Enhance co-teaching practices; find time for co-planning
- ✓ Implement periodic benchmark assessments to monitor growth of subgroups
- ✓ Research ways to incorporate skill development into instructional practices
- ✓ Monitor the pull-out math early intervention program K-2
- ✓ Focus math coaching in Grades 4 & 5
- ✓ Continue to monitor implementation of Investigations in Grades K & 1
- ✓ Model discussion and writing about math thinking
- ✓ Continue to monitor consistent 60 minutes of math instruction daily
- ✓ Continue to monitor consistency of rigorous instruction across grade levels
- ✓ Implement the 10 minute math with fidelity
- ✓ Continue to embed MCAS like short answer questions into assessments
- ✓ Provide students with weekly after school support from classroom teachers

2011 Science & Technology Engineering % of Students at Each Performance Level

Performance %	Advanced/ Above Proficient & Proficient		Needs Improvement		Warning & Failed	
	Nbpt	State	Nbpt	State	Nbpt	State
Grade 5	59	50	32	36	9	15
Grade 8	54	39	40	42	6	19
Grade 9 Biology	90	71	8	21	2	9

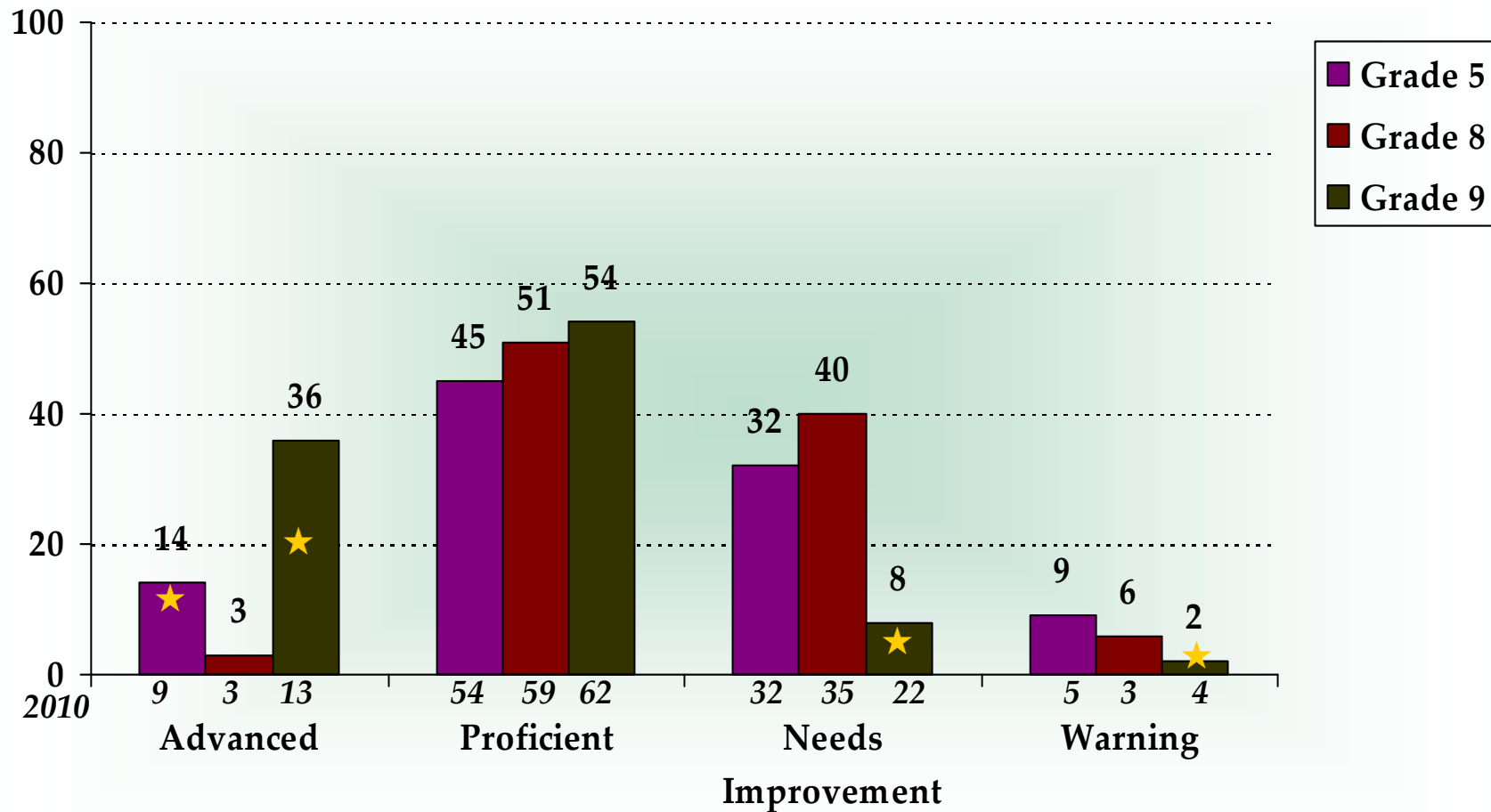
Science & Technology Engineering 2011 Grades 5 & 8 Biology Grade 9 % of Students at each Performance Level



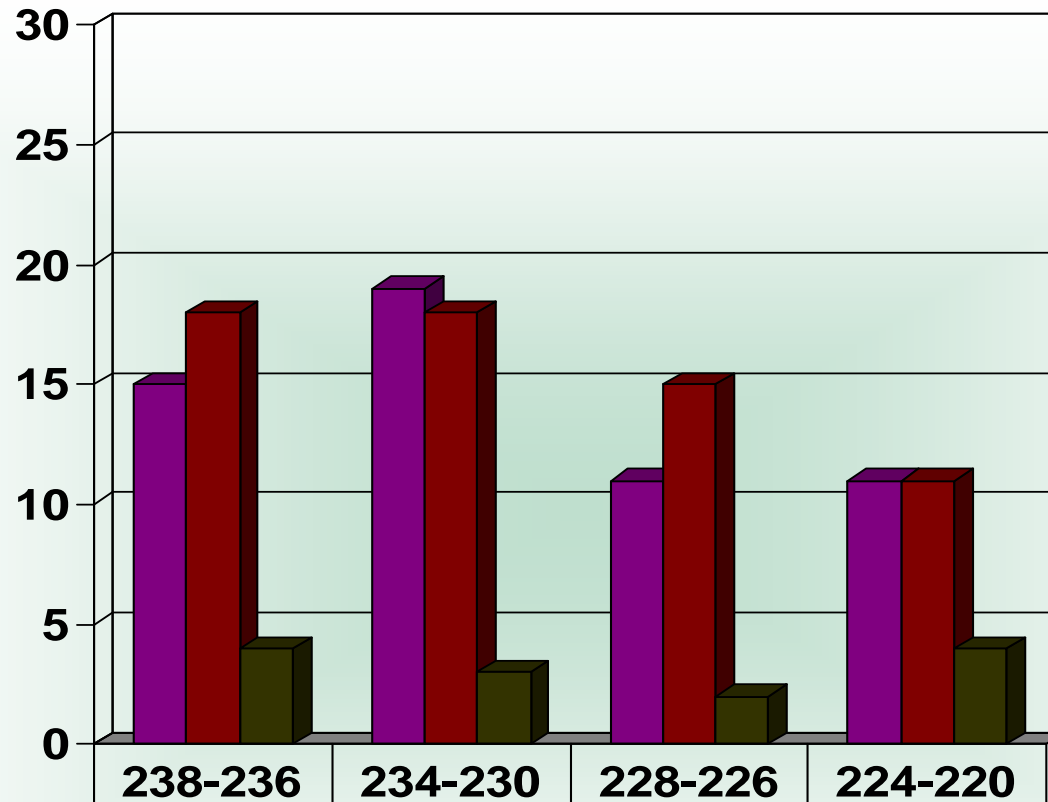
2010-2011 Sci/Tech Comparison Gr.5, 8

Biology Grade 9

Improvement in 4 categories



Spring 2011 Sci-Tech/Bio Needs Improvement Students
Grade 5 (18%), Grade 8 (26%), & Grade 9 (8%)
Detailed Distribution Upper to Lower Band (# of Students)



2011- NI

Grade 5 – 56

- 36 Non SPED/LI (64%)
- 9 SPED (16%)
- 11 Low Inc (20%)
- 3 SPED &LI (5%)

Grade 8 – 62

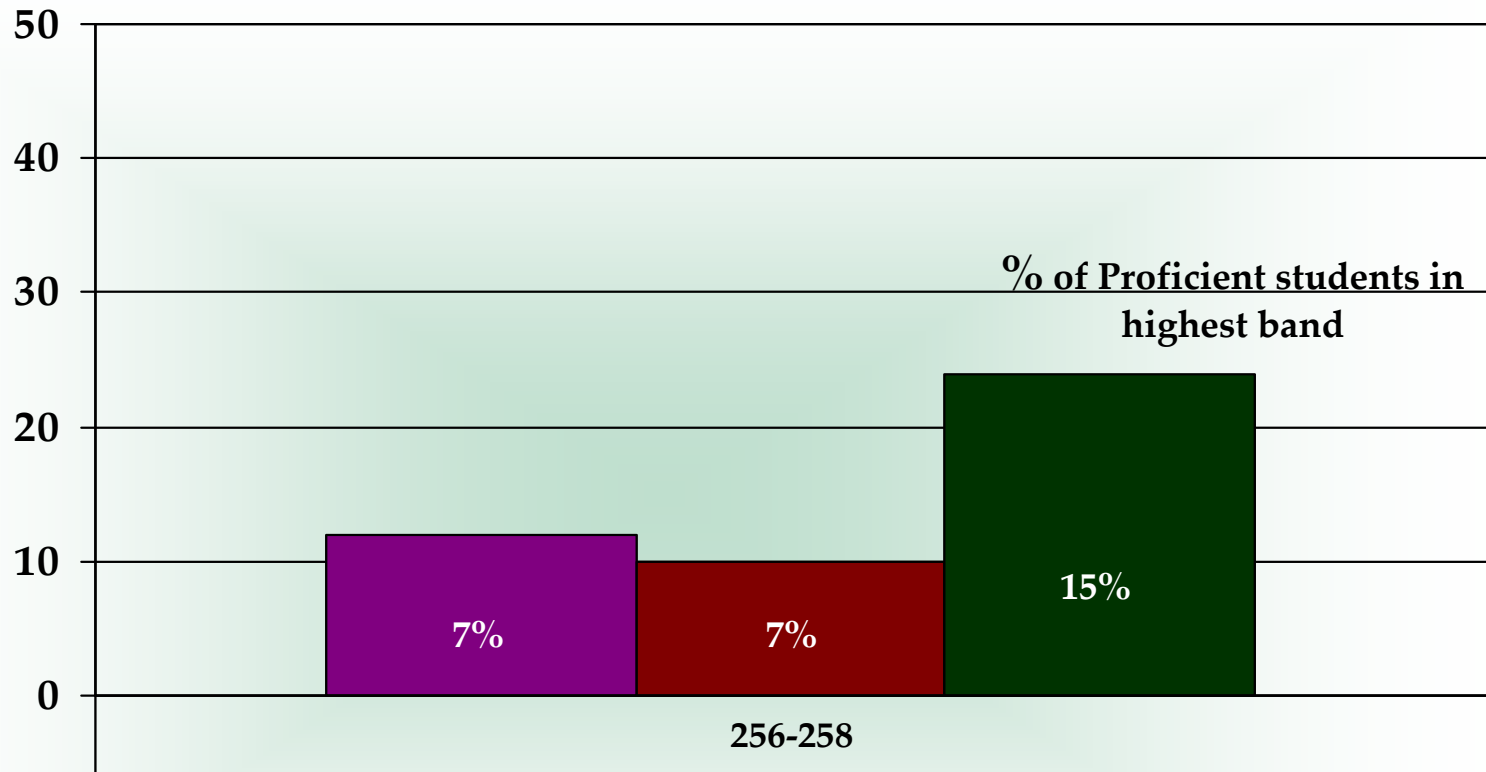
- 40 Non SPED/LI (65%)
- 12 SPED (19%)
- 10 Low Inc (16%)
- 5 SPED &LI (8%)

Grade 9 – 13

- 6 Non SPED/LI (46%)
- 5 SPED (39%)
- 2 Low Inc (15%)
- 1 SPED &LI (8%)

Grade 5- 56	15 7%	19	11	11 2-SPED; 3-LI; 1-SP&LI
Grade 8- 62	18 29%	18	15	11 4-SPED; 4-LI; 1-SP&LI
Grade 9- 13	4 31%	3	2	4 4-SPED; 1-LI; 1-SP&LI

Spring 2011 Sci-Tech/Bio Proficient # of Students at Upper Band Score of 256-258 within 4 points of Advanced



■ Grade 5- 80	45% (of aggregate)	12	# of Proficient students in highest band
■ Grade 8- 80	51%	10	
■ Grade 9- 87	53%	24	

Science & Tech/Engineering and Biology Cohorts

%	2004		2005		2006		2007		2008		2009		2010		2011	
	A&P	Warn	A & P	Warn	A&P	Warn	A&P	Warn	A&P	Warn	A&P	Warn	A&P	Warn	A&P	Warn
Grade 5	59	4	49	5	39	8	67	1	49	8	53	9	63	5	59	9
Grade 6	-	-	-	-	-	-	-	-	-	-	-	-	-	-	-	-
Grade 7	-	-	-	-	-	-	-	-	-	-	-	-	-	-	-	-
Grade 8	46	19	46	9	28	12	45	10	55	8	49	6	62	3	54	6
Grade 9 Biology	-	-	-	-	-	-	-	-	-	-	-	-	75	4	90	2

2011 Sci-Tech/Eng - Grades 5 & 8, Biology Grade 9

% of Advanced & Proficient Students

Sci/Tech Grade 4

Newburyport 2011 – 59%
Comparative Communities

	<u>2011-%</u>
1.Scituate	78
2.Burlington	67
3.Bedford	63
4.Newburyport	59
5.Swampscott	56
6.Wakefield	52

Geographic Proximity

	<u>2011-%</u>
1.Triton	66
2.Amesbury	64
3.Pentucket	63
4.Ipswich	62
5.Georgetown	60
6.Newburyport	59

Aspiration Communities

	<u>2011-%</u>
1.Winchester	77
2.Holliston	74
3.Medfield	68
4.Needham	62
5.Newburyport	59
6.Wellesley	58

Sci/Tech Grade 8

Newburyport 2011 – 54%
Comparative Communities

	<u>2011-%</u>
1.Scituate	56
2.Newburyport	54
2. Swampscott	54
2. Burlington	54
3. Bedford	51
4. Wakefield	45

Geographic Proximity

	<u>2011-%</u>
1.Newburyport	54
1.Georgetown	54
2.Triton	50
3.Ipswich	46
3.Pentucket	46
3.Amesbury	46

Aspiration Communities

	<u>2011-%</u>
1.Winchester	80
2.Medfield	74
3.Newburyport	54
3.Holliston	54
4.Needham	53
6.Wellesley	41

Biology Grade 9

Newburyport 2011 – 90%
Comparative Communities

	<u>2011-%</u>
1.Newburyport	90
2.Swampscott	87
3.Wakefield	81

1.Bedford (physics)	85
2. Scituate (physics)	76
3.Burlington (physics)	66

Geographic Proximity

	<u>2011-%</u>
1.Newburyport	90
2.Georgetown	89
3.Pentucket	87
4.Ipswich	82
5.Triton	78
6.Amesbury	75

Aspiration Communities

	<u>2011-%</u>
1.Medfield	95
2.Winchester	93
3.Holliston	91
4.Newburyport	90
4.Needham	90
Wellesley (chemistry)	79

Science & Tech/Eng Findings

High
School

Middle
School

Elementary
Schools

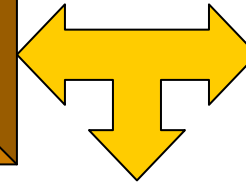
- ✓ **Significant increase in scores from 2010 MCAS**
- ✓ **90% of students in Advanced & Proficient categories**
- ✓ **There was significant decrease of students in Needs Improvement**
- ✓ **Significant growth in the cohort from grade 8 to 9**
- ✓ **Biology only tested**

- ✓ **Slight decrease in scores from 2010 MCAS in Grade 5**
- ✓ **A more significant decrease at Grade 8**
- ✓ **40% of students in the Needs Improvement category at Grade 8**

Science & Tech/Eng Actions

High School

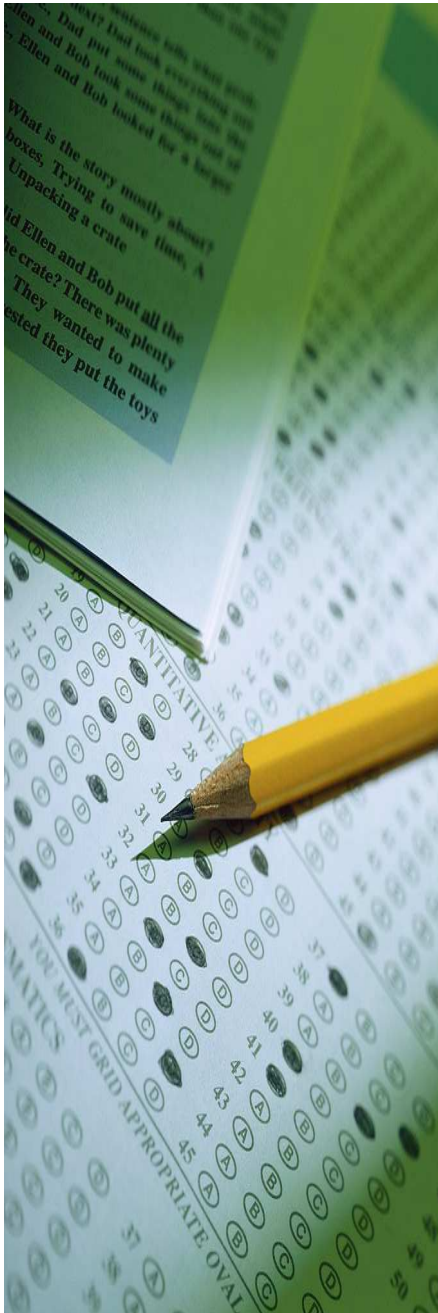
Middle School



Elementary Schools

- ✓ **Disaggregate data**
- ✓ **Monitor achievement of students who have scored less than proficient**
- ✓ **Provide MCAS academic support**
- ✓ **Ensure consistency of instruction**
- ✓ **Examine and analyze common assessments**

- ✓ **Disaggregate data**
- ✓ **Monitor achievement of all students through formative assessments**
- ✓ **Continue to provide students with weekly after school support from classroom teachers**
- ✓ **Examine data for instructional alignment**
- ✓ **Continue to provide instructional coaching at the elementary level**
- ✓ **Create opportunities for co-teaching in the science classes**
- ✓ **Monitor consistency of rigorous instruction across grade levels**
- ✓ **Embed MCAS like Open Response questions into assessments**
- ✓ **Coordinate vertical curriculum meetings with elementary and middle school science**



A special thank you to our students, teachers, support staff, administrators and parents for their ongoing hard work and effort and the community for their continuous support.